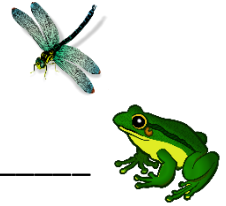


## MIXED RATIO PROBLEMS 6:1

### 1. Frogs and Dragonflies (Simplifying Ratios Part-to-Part)

In a pond, there are **12 frogs** and **8 dragonflies** resting on lily pads.

What is the **ratio of frogs to dragonflies** in **simplest form**? \_\_\_\_\_



### 2. Forest Trees (Part-to-Whole)

A small forest area is planted with just **birch** and **oak** trees.

It has a ratio of **10 oak trees** to every **4 birch trees**.

Write down the **ratio of oak trees to all trees** in simplest form. \_\_\_\_\_



### 3. Squirrel Snack Mix (Simplifying Ratios)

A squirrel collects **20 acorns** and **8 pinecones** for winter.

Write the ratio of acorns to pinecones and **simplify** it. \_\_\_\_\_



### 4. Penguin Parade (Equivalent Ratios)

For every **2 baby penguins**, there are **3 adult penguins** in a colony.

If there are **8 baby penguins**, how many adult penguins should there be if the ratio stays the same? \_\_\_\_\_



### 5. Rainy vs Sunny Days (Simplifying Ratios)

Last month had **6 rainy days** and **24 sunny days**.

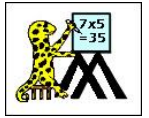
Write down the **ratio of rainy days to sunny days** and simplify it. \_\_\_\_\_



### 6. Hamster vs Human Laps (Equivalent Ratios)

Your hamster runs **9 laps** on its wheel in the time it takes for you run **4 laps** around the garden. At this rate, how many laps will the **hamster** run if **you** manage to run **12 laps** round the garden? \_\_\_\_\_





## MIXED RATIO PROBLEMS 6:1 ANSWERS

### 1. Frogs and Dragonflies (Part-to-Part)

In a pond, there are **12 frogs** and **8 dragonflies** resting on lily pads.

What is the **ratio of frogs to dragonflies** in **simplest form**?  $12:8 = 6:4 = 3:2$



### 2. Forest Trees (Part-to-Whole)

A small forest area is planted with only birch and oak trees.

It has a ratio of **10 oak trees** to every **4 birch trees**.

Write down the **ratio of oak trees to all trees** in simplest form.  $10:14 = 5:7$



### 3. Squirrel Snack Mix (Simplifying Ratios)

A squirrel collects **20 acorns** and **8 pinecones** for winter.

Write the ratio of acorns to pinecones and **simplify** it.  $20:8 = 5:2$



### 4. Penguin Parade (Equivalent Ratios)

For every **2 baby penguins**, there are **3 adult penguins** in a colony.

If there are **8 baby penguins**, how many adult penguins should there be if the ratio stays the same?  $2:3 = 8:12$  There will be **12 adult penguins**.



### 5. Rainy vs Sunny Days (Simplifying Ratios)

Last month had **6 rainy days** and **24 sunny days**.

Write down the **ratio of rainy days to sunny days** and simplify it.  $6:24 = 1:4$



### 6. Hamster vs Human Laps (Equivalent Ratios)

Your hamster runs **9 laps** on its wheel in the time it takes for you run **4 laps** around the garden. At this rate, how many laps will the **hamster** run if **you** manage to run **12 laps** round the garden?  $9:4 = 27:12$  The hamster will run **27 laps**.

