

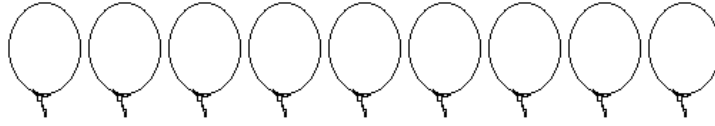
Name \_\_\_\_\_

Date \_\_\_\_\_



## PART-TO-PART RATIO COLOR IN 2

1) Ratio of red balloons to green balloons is 4:5.



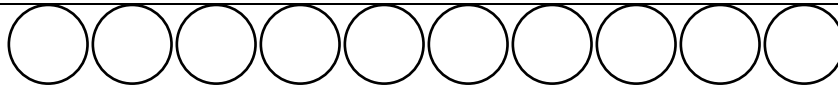
There are \_\_\_\_ red balloons and \_\_\_\_ green balloons.

2) Ratio of yellow fish to blue fish is 7:3.



There are \_\_\_\_ yellow fish and \_\_\_\_ blue fish.

3) Ratio of red circles to white circles is 2:3.



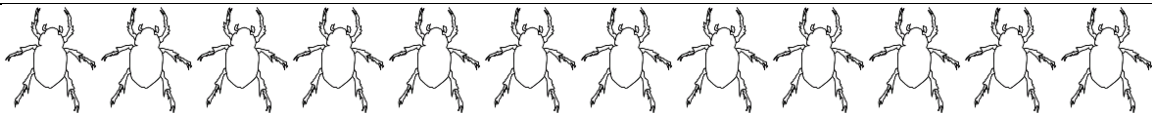
There are \_\_\_\_ red circles and \_\_\_\_ white circles.

4) Ratio of black bears to brown bears is 1:1.



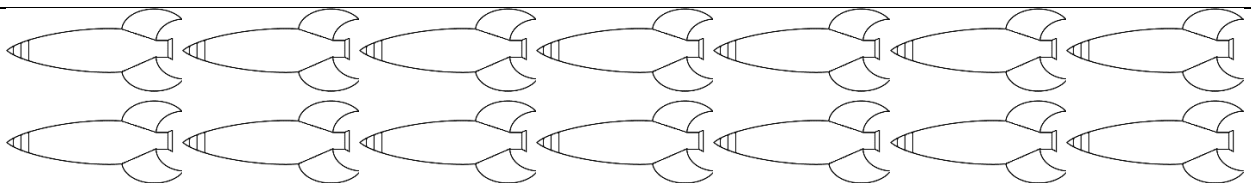
There are \_\_\_\_ black bears and \_\_\_\_ brown bears.

5) Ratio of black beetles to green beetles is 2:1.



There are \_\_\_\_ black beetles and \_\_\_\_ green beetles.

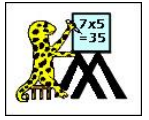
6) Ratio of blue rockets to red rockets 2:5.



There are \_\_\_\_ blue rockets and \_\_\_\_ red rockets.

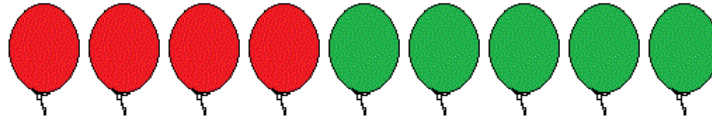
Name \_\_\_\_\_

Date \_\_\_\_\_



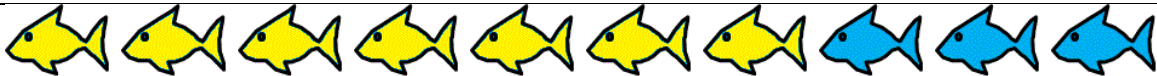
## PART-TO-PART RATIO COLOR IN 2 ANSWERS

1) Ratio of red balloons to green balloons is 4:5.



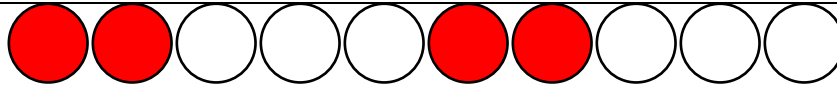
There are 4 red balloons and 5 green balloons.

2) Ratio of yellow fish to blue fish is 7:3.



There are 7 yellow fish and 3 blue fish.

3) Ratio of red circles to white circles is 2:3.



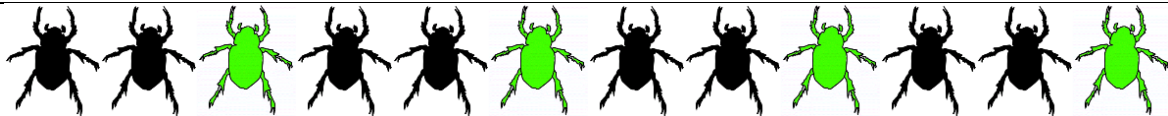
There are 4 red circles and 6 white circles.

4) Ratio of black bears to brown bears is 1:1.



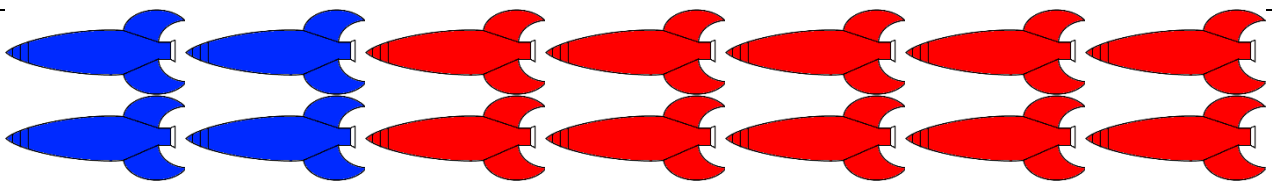
There are 5 black bears and 5 brown bears.

5) Ratio of black beetles to green beetles is 2:1.



There are 8 black beetles and 4 green beetles.

6) Ratio of blue rockets to red rockets 2:5.



There are 4 blue rockets and 10 red rockets.